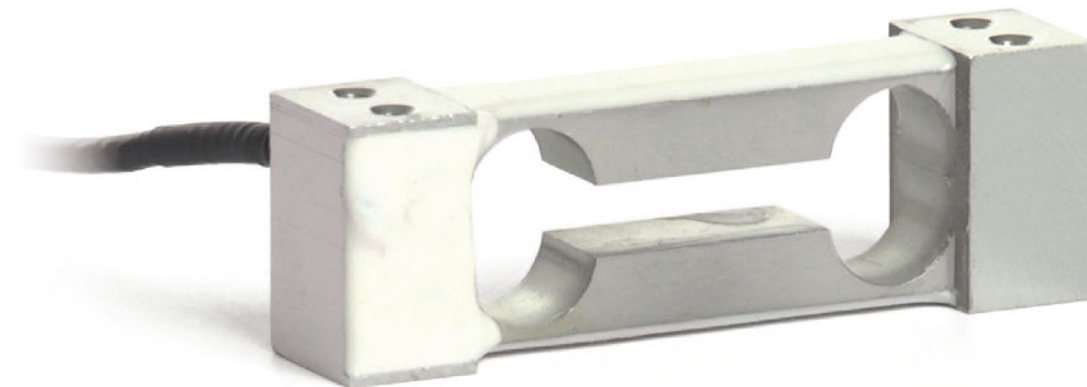




Manufactured according to OIML R60 standards

Capacity from 0.25 kg to 1 kg



- ALUMINUM ALLOY
- COMBINED ERROR $\leq \pm 0.03\%$
- IP65 PROTECTION RATING

CAPACITY	kg	PLATFORM (mm)	NET WEIGHT (kg)
	0.25	200 x 200	0.1
	0.5	200 x 200	0.1
	1	200 x 200	0.1

CERTIFICATIONS

EAC Complies with the Eurasian Customs Union regulations

UK CA Equivalent of the CE marking for the United Kingdom

CERTIFICATIONS ON REQUEST

Calibration report

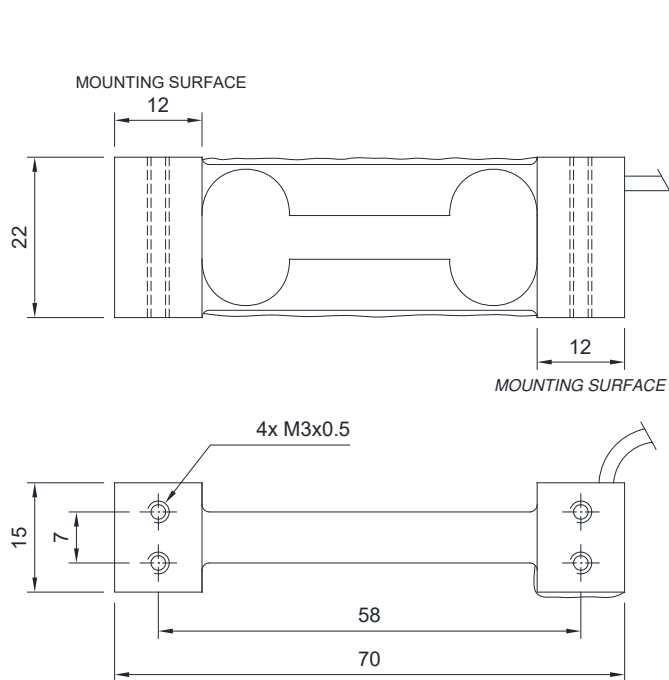
Ex ATEX II 1G 2D (zone 0-1-2-21-22) (**CE - UK CA**)

IECEx (zone 0-1-2-20-21-22)

EAC Ex Complies with the Eurasian Customs Union regulations for use in potentially explosive atmospheres

Ex NIEPSA Complies with Chinese market regulations for use in potentially explosive atmospheres

DIMENSIONS (mm)



For the load cell fixing screws, provide the tightening torque indicated in the table

Screw	M3	
Screw class	6.8	8.8
Tightening torque	1 Nm	1.3 Nm

TECHNICAL FEATURES

Material	Aluminum alloy		
Nominal load (E max)	0.25 - 0.50 - 1.00 kg		
Combined error	≤ ±0.03%		
Protection rating	IP65		
Rated output	1 mV/V ±20%	Input resistance	410 Ω ±10
Temperature effect on zero	0.0025% °C	Output resistance	350 Ω ±3
Temperature effect on span	0.0025% °C	Zero balance	±2%
Compensated temperature range	-10 °C / +40 °C	Insulation resistance	>2000 MΩ
Operating temperature range	-20 °C / +60 °C	Safe overload (% of full scale)	200%
Creep at nominal load in 30 minutes	0.03%	Ultimate overload (% of full scale)	400%
Max supply voltage without damage	15 V	Deflection at nominal load	0.3 mm

ELECTRICAL CONNECTIONS

Cable length	3 m
Cable diameter	2.5 mm
Cores	4 x 0.20 mm ²



The Company reserves the right to make changes to the technical data, drawings and images without notice.